



Assessment Update February 2019



Assessments

- **KIDS** - Kindergarten Individual Development Survey is administered during the first 40 days of Kindergarten & reported to the state.
- **Illinois Science Assessment** - administered to 5th & 8th grade students in an online format and is aligned to the Illinois Learning Standards for Science incorporating the Next Generation Science Standards.
- **MAP** - Measures of Academic Progress is administered to students in grades 2-8 in the areas of reading and math in an online, computer adaptive format and is aligned to the Illinois Learning Standards.
- **Illinois Assessment of Readiness (formerly PARCC)**



Illinois Assessment of Readiness

- English Language Arts/Literacy & Mathematics accountability test for students in grades 3 - 8 (replaces PARCC)
- “The Illinois Assessment of Readiness measures the same standards and includes the same test questions used the last four years. Using the same content and measuring the same standards ensures comparability from year to year – an essential commitment to including growth in our support and accountability system. “
- One year temporary contract given to Pearson for this spring
- Reduced number of units from 7 to 5
 - 3 Math Units
 - 2 Reading Units
- Assessment window shifted into April

Updated Assessment Calendar 2018-2019



Arlington Heights School District 25 Assessment Calendar (2018-2019)



Fall 2018	Winter 2019	Spring 2019
<p>KIDS <u>August 21st - October 22nd</u> Grade K (data entry October 15th - October 29th)</p> <p>AIMSWeb <u>August 27th - 31st</u> Letter Naming Fluency (K) Letter Sound Fluency (K) R-CBM (1) Number ID (K) Oral Counting (K if NIM < 26) Quantity Discrimination (K) Missing Number (K) <u>September 4th - 21st</u> R-CBM (2-8) Math Computation (1-5) Math Concepts & Applications (6-8)</p> <p>FitnessGram (Physical Education) <u>August 27th - September 14th</u> Grades 3-8 (K-2 practice test encouraged)</p> <p>Fountas & Pinnell Benchmarking <u>September 4th - 28th</u> Grades 1-5</p> <p>MAP <u>September 4th - 28th</u> Individual students (progress monitor students at or below 40th percentile AND new students grades 3-8)</p> <p>ESGI <u>September 24th - October 2nd</u> D25 KScreen: Jolly Phonics, Uppercase, Lowercase (K)</p> <p>CogAT <u>October 9th - 26th</u> Grades 3 & 5</p>	<p>Fountas & Pinnell Benchmarking <u>November 26th - December 21st</u> Grade K</p> <p>MAP <u>December 3rd - 21st</u> Math 2-5 CC / 6+ CC (Grades 3-7) Reading 2-5 CC / 6+ CC (Grades 3-7) (grade 8 NEW students OR grade 8 - progress monitor students at or below the 40th%tile)</p> <p>AIMSWeb <u>December 3rd - 21st</u> Letter Naming Fluency (K if < 16 in fall) Letter Sound Fluency (K if < 4 in fall) R-CBM (1-2) R-CBM (3-5 below national 40%tile in fall)</p> <p>Missing Number (K) Quantity Discrimination (K) Math Computation (1-3) Math Computation (4-5 below national 40%tile in fall)</p> <p>ACCESS 2.0 <u>January 16th - February 19th</u> All EL students (including those not serviced)</p>	<p>Illinois Science Assessment <u>March 6th - 15th</u> Grade 5 <u>April 4th - 12th</u> Grade 8</p> <p>Illinois Assessment of Readiness <u>April 2nd - 12th</u> Math & ELA Grades 3-8</p> <p>FitnessGram (Physical Education) <u>April 1st - 18th</u> Grades 6 - 8 <u>April 22nd - May 10th</u> Grades 3 - 5</p> <p>MAP <u>April 8th - 24th</u> Reading: 2-5 CC / 6+ CC (Grades 2-8) Math: 2-5 CC / 6+ CC (Grades 2-8)</p> <p>Fountas and Pinnell Benchmarking <u>April 8th - May 17th</u> Grades K-3 (ALL) Grade 4 (students below S in the fall) Grade 5 (students below V in the fall)</p> <p>AIMSWeb <u>April 29th - May 15th</u> Letter Naming Fluency (K - if < 40 in winter) Letter Sound Fluency (K - if < 23 in winter) R-CBM(1-2) R-CBM (3-5 below national 40%tile in winter) R-CBM (6-8 below national 40%tile in fall) Missing Number (K) Quantity Discrimination (K) Math Computation (1-2 ALL, 3-5 below 40%tile winter) Math Concepts & Applications (6-8 below national 40%tile in fall)</p> <p>Advanced Placement Testing <u>May 13th - 21st</u> Advanced Math (Grades 3-7) & ALA (Grades 5-7)</p>



Data Days

- Three times a year
 - Fall - mid-October
 - Winter -
 - Spring - end of May
- Review data from district assessments & use that information to guide instructional planning
- Students scheduled for interventions



Any Questions?

K-5

Literacy



K-5 Literacy (Writing) Committee

- Committee
 - 26 Members
 - Partner Teachers
- Timeline
 - 2017-2019



Professional Learning

Philosophy

“Tapping into personal passions and interests is a crucial part to becoming a writer.” Jennifer Serravallo



Balanced Literacy

Reading

Writing

Word Study

Speaking and Listening



Being a Writer

Teachers as writers & teachers of writing

Whole Child

Students draft, research, revise, discuss, proofread, publish

Genres: Narrative, Informative/explanatory, opinion

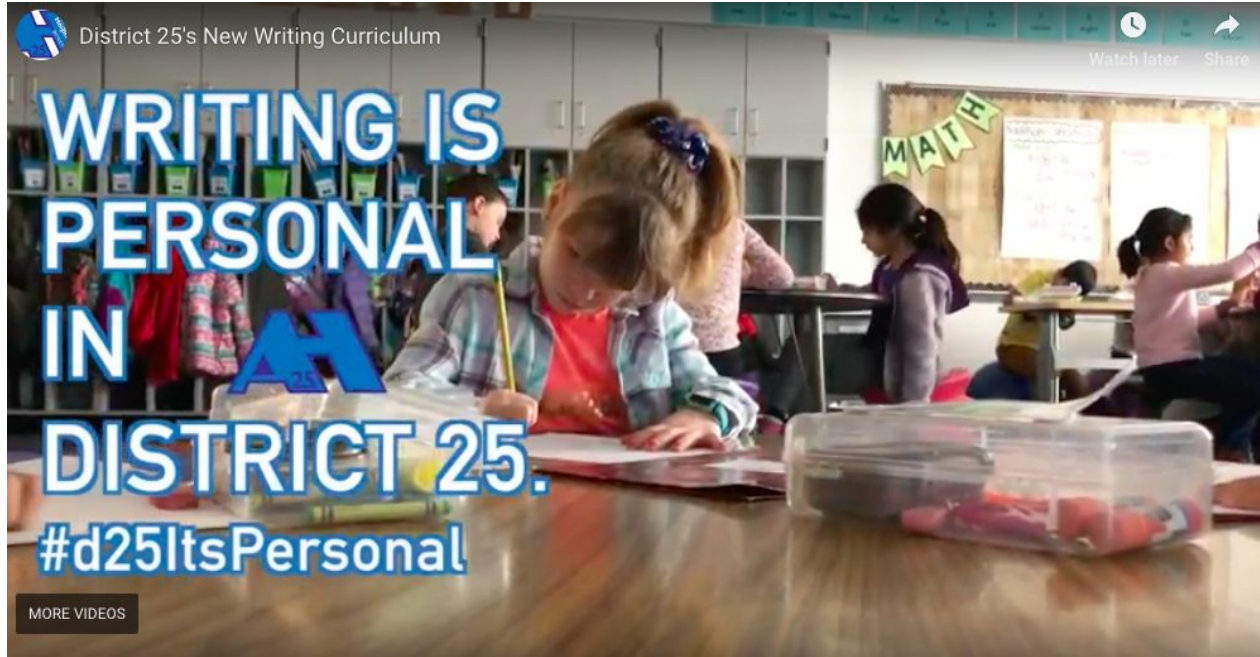
Speaking, listening, asking questions,

Peers

Illinois Learning Standards



Video



<https://youtu.be/soNRSa2HSxc>

Being a Writer

- Process writing approach
- Collaborative writing tasks
- Study of writing models
- Writing strategies
- Specific product goals
- Prewriting
- Inquiry activities
- Teacher and peer conferences
- Classroom discussions
- Writing for real audiences and purposes
- Student self-assessment
- Regular periods of writing



Fiscal Impact- Year One 2019-2020

Item	Cost
The Core Curriculum (Teacher Manuals, Student Resource Books, Mentor Texts)	\$134,700
Learning Hub (digital resources)	\$1,323
Professional Learning	\$25,450
TOTAL	\$161,473

Year 2 and beyond - consumables, digital access, ongoing professional learning (annual cost = \$43,131)

Arlington Heights School District 25 Five Year Financial Projections

February 21, 2019

Presented By

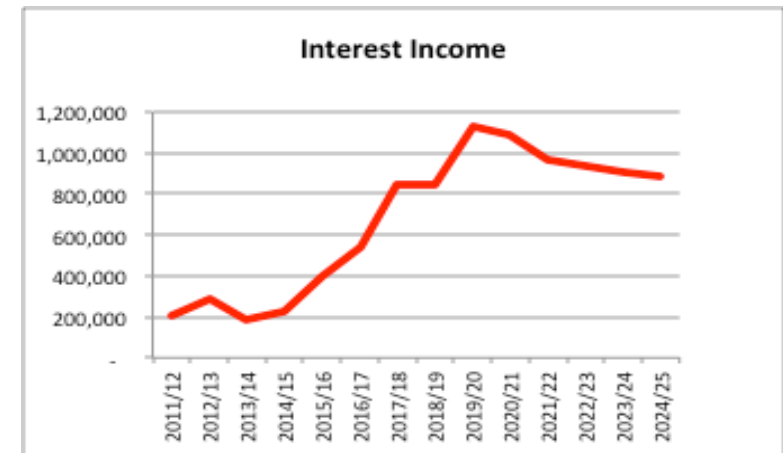
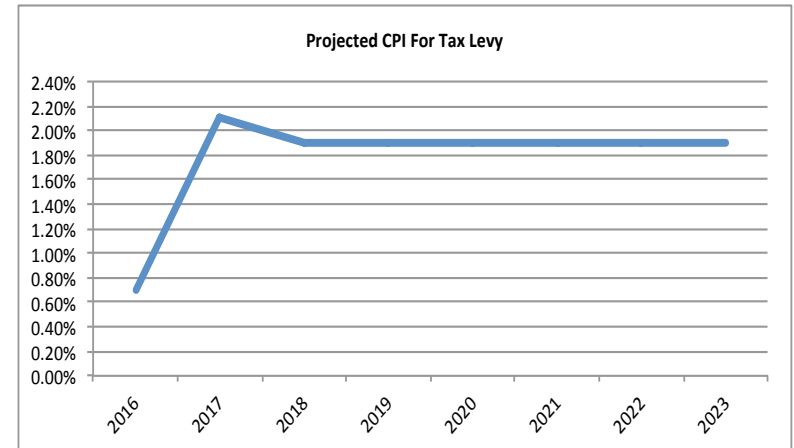
Stacey Mallek

Asst Superintendent For Business/CSBO

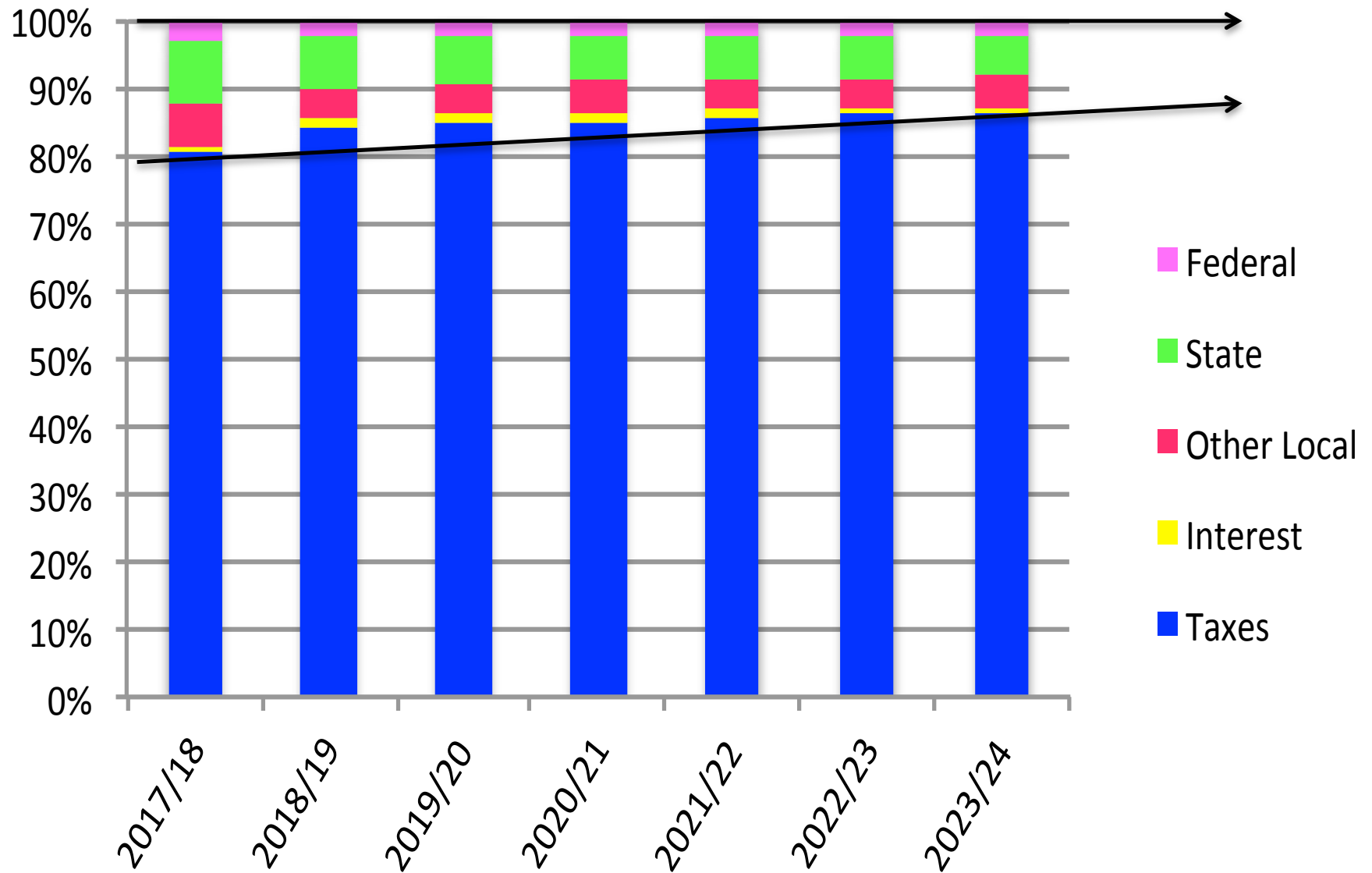
Assumptions

Revenues

- Property Taxes
 - < 1% new growth annually
 - Tax refunds of \$417,000 annually
- State
 - Evidence Based Funding
 - Transportation reimbursement
- Federal
 - IDEA, ESSA
- No significant change in local revenue
- Interest income projections are 2.0% of prior year fund balance



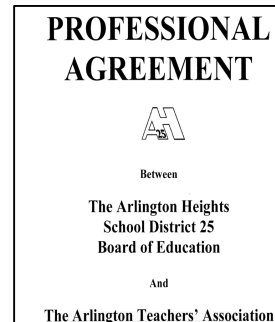
D25 Projected Revenues



Assumptions - Expenditures

Education Fund

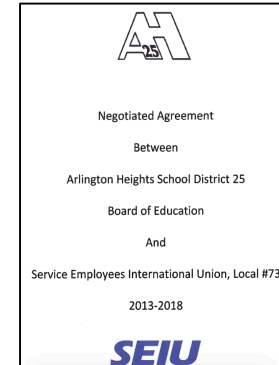
- Salaries
 - Current staff levels and negotiated agreement
 - CPI
 - 3 retirements annually
- Benefits
 - Health insurance costs increase 6% annually
 - Tier I and II TRS pension costs of 0.58% times projected salaries
 - Tier III TRS pension costs of 8.58% start in 2020/21 (pending IRS approval)
 - THIS costs of 0.92% time projected salaries
 - State pension cost shift – an additional 0.5% of total TRS salaries per year (i.e. 0.5%, 1.0%, 1.5%, etc) beginning in 2020/21
- Purchased services/Supplies
 - Software system maintenance contracts/licenses, auditors, legal counsel, staff development, mileage reimbursement, postage, etc.
 - Reduction in DSL budget by \$100,000
 - Other efforts
- Tuition - flat
- Contingencies
 - 5 FTE for certified staff, 5 FTE for non-certified staff
 - \$100,000 for non-staff emergencies



Assumptions - Expenditures

Operations & Maintenance Fund

- Salaries
 - Current staff and negotiated agreement
- Benefits
 - Health insurance costs increase by 6%
- Purchased Services
 - Telephone, sanitation, water/sewer, landscape maintenance, building automation system contract, repair and maintenance contracts, property/liability insurance, etc.
 - Increase by 1% annually
- Supplies
 - Custodial and maintenance supplies, natural gas, electricity, mulch, salt, etc.
 - Increase by 1.5% annually
- Capital Outlay
 - \$60,000/yr for District vehicle replacement
- Transfers
 - To Capital Projects Fund from O&M and Working Cash (bond proceeds)





Assumptions - Expenditures

Debt Service Fund

- Payments on bond issues

Transportation Fund

- 3.0% increase for 2019/20 based on contract
- Annual increase for bus transportation costs based on past history of 3%

IMRF/Social Security Fund

- Pension costs increase in relationship to related salaries
- IMRF employer rate 10.08% in 2019 to 6.76% in 2024



Assumptions - Expenditures

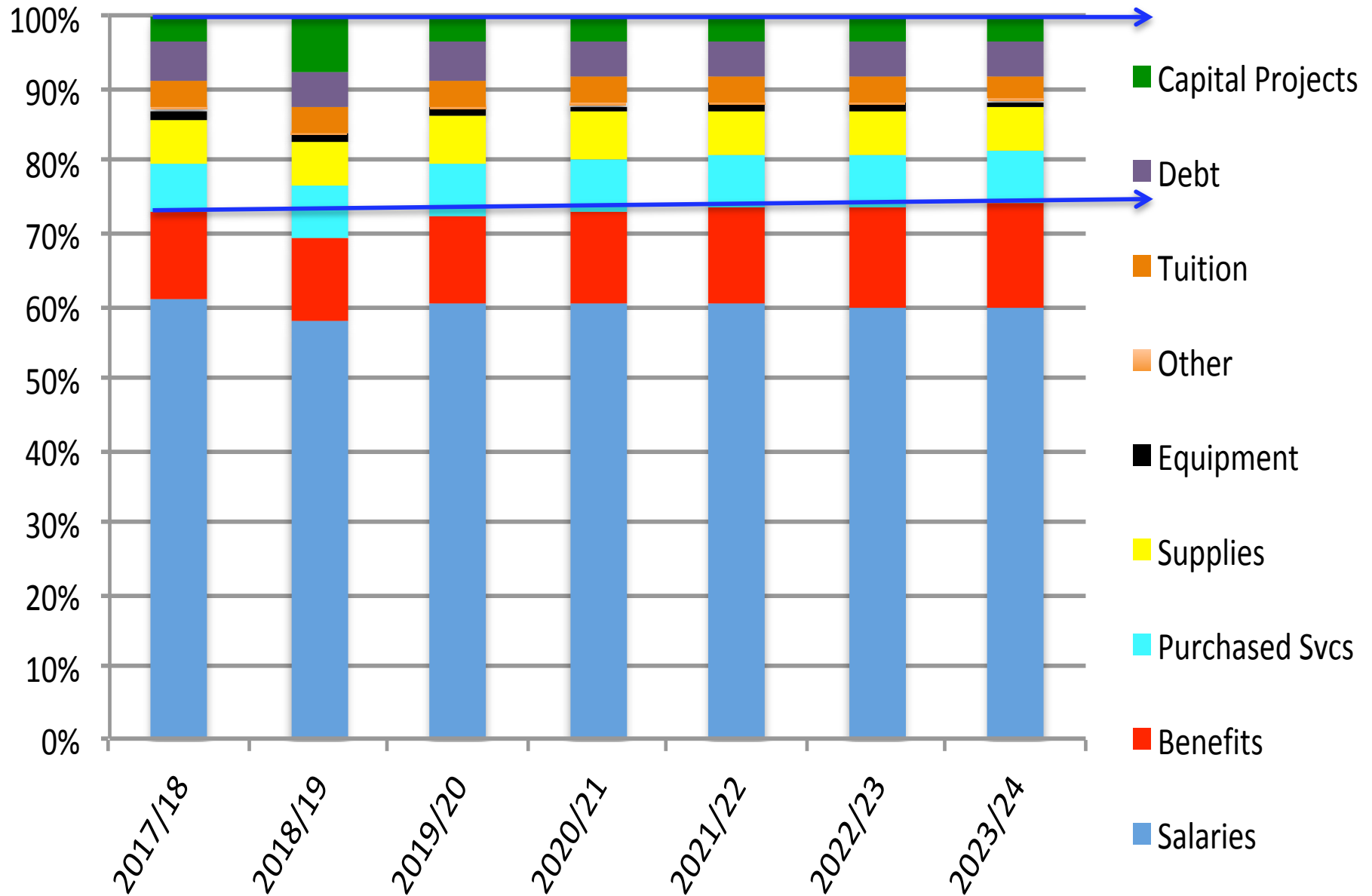
Capital Projects Fund

- Based on Five-Year Facilities Master Plan presented to the Board in September 2018
- Total of about \$12.9 million for building projects (paving, flooring, projects, roofs, HVAC, etc.) including some 10-year life safety survey items

Life Safety Fund

- \$1.3 million over next 5 years for life safety work
 - Based on 10-year life safety survey

D25 Projected Expenditures

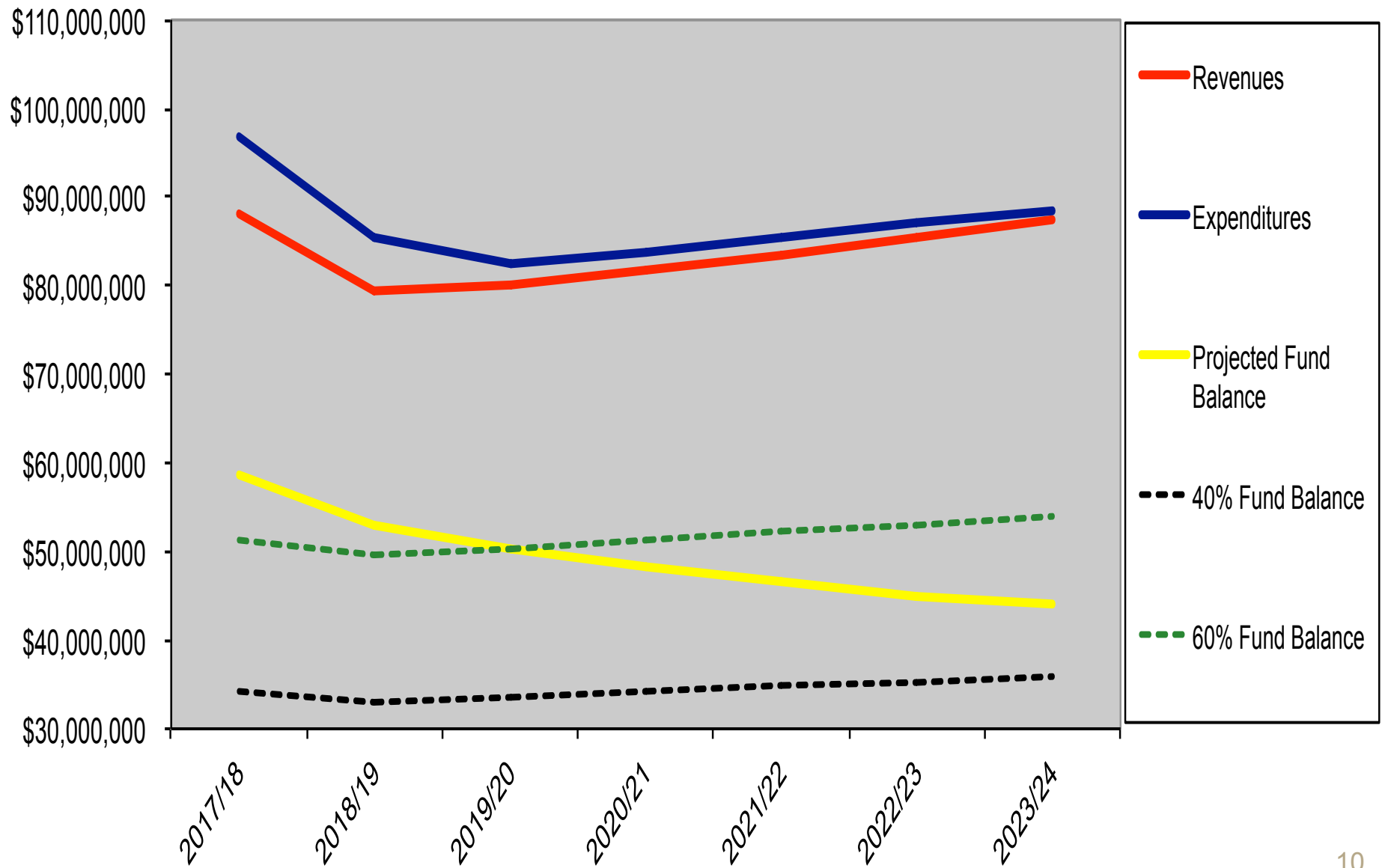


Financial Summary: All Funds

	Est Actual 2017/18	Budget 2018/19	Projected 2019/20	Projected 2020/21	Projected 2021/22	Projected 2022/23	Projected 2023/24
Revenues							
Property Taxes	\$ 63,325,559	\$ 65,967,010	\$ 66,977,009	\$ 68,820,102	\$ 70,689,091	\$ 72,677,121	\$ 74,484,256
CPPRT	\$ 877,401	\$ 816,058	\$ 816,058	\$ 816,058	\$ 816,058	\$ 816,058	\$ 816,058
Interest	\$ 844,714	\$ 842,500	\$ 1,132,600	\$ 1,085,000	\$ 969,300	\$ 933,400	\$ 901,600
Food Service	\$ 1,806,944	\$ 1,676,000	\$ 1,676,000	\$ 1,676,000	\$ 1,676,000	\$ 1,676,000	\$ 1,676,000
Rentals	\$ 948,276	\$ 980,700	\$ 995,411	\$ 1,010,342	\$ 1,025,497	\$ 1,040,879	\$ 1,056,492
Other Local (tuition,fees, etc.)	1,955,088	1,060,094	1,039,239	1,039,239	1,039,239	1,039,239	1,039,239
Bonds	8,063,725	-	-	-	-	-	-
State	7,767,551	6,125,845	5,489,635	5,489,635	5,489,635	5,489,635	5,489,635
Federal	2,422,576	1,939,692	1,887,199	1,887,199	1,887,199	1,887,199	1,887,199
Total Revenues	\$88,011,834	\$79,407,899	\$80,013,150	\$81,823,574	\$83,592,019	\$85,559,532	\$87,350,479
Expenditures							
Salaries	47,772,440	49,457,829	49,891,551	50,696,154	51,454,870	52,228,047	52,975,361
Employee Benefits	9,429,829	9,931,994	10,070,564	10,667,819	11,267,002	11,866,020	12,491,968
Purchased Svcs	5,213,528	5,955,905	5,985,248	6,121,643	6,261,538	6,405,029	6,525,172
Supplies	4,656,025	5,212,859	5,229,695	5,246,784	5,264,128	5,281,733	5,299,603
Capital Outlay	1,004,429	830,043	830,043	830,043	830,043	830,043	830,043
Other	234,570	216,675	215,725	215,725	260,725	260,725	275,725
Tuition	2,755,145	2,901,212	2,901,212	2,901,212	2,901,212	2,901,212	2,901,212
Debt	4,203,807	4,383,337	4,376,562	4,378,062	4,367,512	4,382,737	4,264,337
Sub-Total Expenditures	\$75,269,773	\$78,889,854	\$79,500,600	\$81,057,442	\$82,607,030	\$84,155,547	\$85,563,421
Sub-Total Surplus/(Deficit)	\$ 12,742,061	\$ 518,045	\$ 512,550	\$ 766,132	\$ 984,989	\$ 1,403,985	\$ 1,787,058
Construction/Life Safety	21,407,294	6,446,708	2,983,900	2,703,860	2,779,000	2,993,500	2,771,500
Total Surplus/(Deficit)	\$ (8,665,233)	\$ (5,928,663)	\$ (2,471,350)	\$ (1,937,728)	\$ (1,794,011)	\$ (1,589,515)	\$ (984,442)
Ending Fund Balance	58,781,573	52,852,910	50,381,560	48,443,833	46,649,821	45,060,306	44,075,864
Less: Debt Service FB	(1,202,416)	(1,291,349)	(1,343,776)	(1,371,855)	(1,407,167)	(1,454,376)	(1,395,012)
Net Fund Balance	57,579,157	51,561,561	49,037,784	47,071,978	45,242,654	43,605,930	42,680,853
% of next yr's budget	71.1%	66.0%	61.8%	58.1%	54.7%	51.9%	50.0%

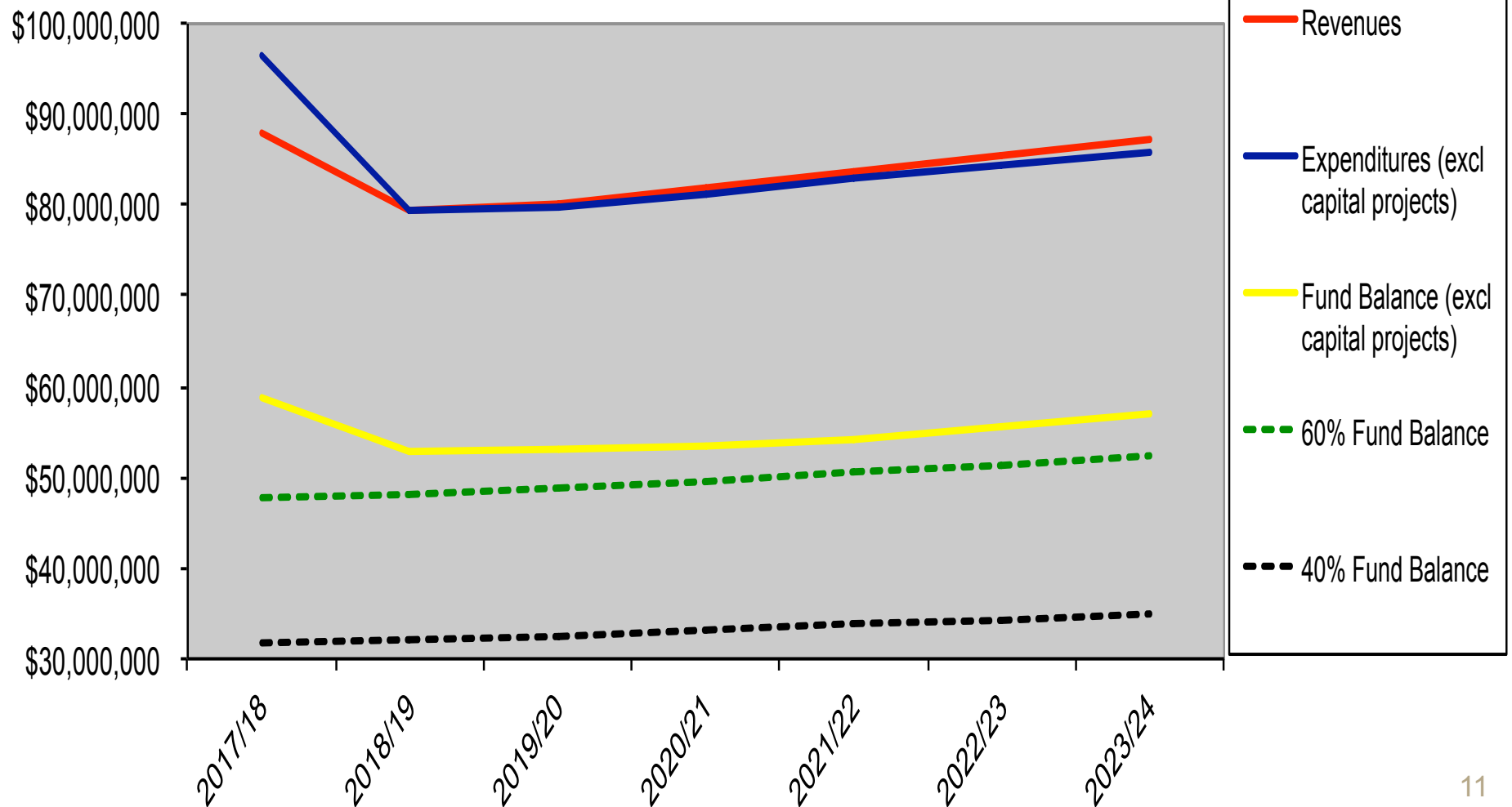
In February of 2018, projected fund balance was 48.9% in 2022/23

Arlington Heights School District 25 Projected Revenues, Expenditures and Fund Balance



If we didn't pay for capital projects out of operating funds...

Arlington Heights School District 25
Projected Revenues, Expenditures and Fund Balance
(excluding capital projects costs)





Current Fund Balance Goal = 60%

- Taxes collected in March/April and August/September (no longer December)
- Fund Balance as of 6/30 must provide cash flow for expenditures until 2nd installment of property taxes is received

Month Taxes Are Received	Months that Reserves will cover Expenditures	# Months	% of Fiscal Year
October	Jul - Sep	3	25%
November	Jul - Oct	4	33%
December	Jul - Nov	5	42%

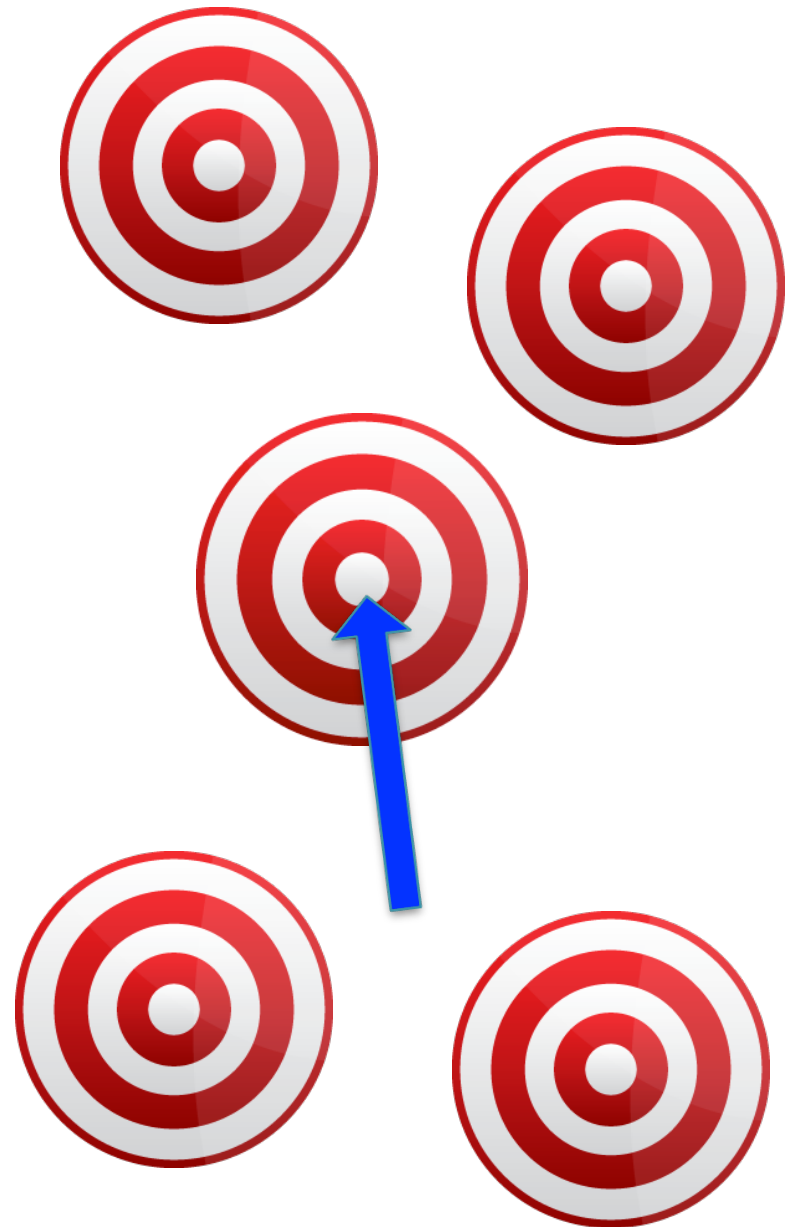
Take Aways

- ☹️ Largest revenue source predicted to grow at 10-year CPI average of 1.9% each year (used to be 2.4%)
- ☹️ Can't control all expenditures
 - ☹️ (utility costs, benefits, State mandates, gas prices, out-of-district tuition)
- ☹️ Property tax reform?
 - ☹️ Based on fund balance > 50%?
- ☹️ Unfunded mandates
- 😊 All salaries tied to CPI
- 😊 New State funding formula – will the hold harmless remain?
- 😊 Pension reform - anticipated
- 😊 Contingency funds use
- 😊 Tax refunds
- 😊 Fund Balance & Time

Questions?



Managing our finances
locally



Managing our finances with
State law effects



Arlington
Heights
SCHOOLDISTRICT25

EMBRACING TODAY - INSPIRING TOMORROW

Demographic Trends and Enrollment Projections

February 21, 2019

The Background Behind Demographic and Enrollment Projections

- Dr. John Kasarda: North Carolina University
- Data analysis
 - Birth rates
 - Student migration
 - New housing developments
 - Enrollment trends
- Professional judgment and over 35 years of experience in the Chicago suburban area
- Demographics Projections are part art and part science



Demographic History

- History of Arlington Heights growth
- Rollercoaster - rapid rise, sharp decline, steady growth
- Enrollment growth over the past five years
- How our enrollment in 2019 nearly matches enrollment numbers from the early 1960's and the late 1970's
- Our Kindergarten – 8th grade enrollment has increased by 99 students since I last shared a demographics report with the Board of Education two years ago

Table 3

Arlington Heights School District 25 Enrollment Trends: 1957 to 2018

School Year	Total Enrollment	School Year	Total Enrollment
1957-58	3,008	1980-81	5,109
1958-59	3,570	1981-82	4,779
1959-60	4,027	1982-83	4,532
1960-61	4,350	1983-84	4,253
1961-62	5,496	1984-85	3,915
1962-63	6,186	1985-86	3,797
1963-64	6,994	1986-87	3,711
1964-65	7,597	1990-91	3,949
1965-66	8,336	1995-96	4,373
1966-67	8,881	2000-01	4,759
1967-68	9,376	2005-06	4,820
1968-69	9,801	2006-07	4,899
1969-70	10,036	2007-08	4,924
1970-71	9,994	2008-09	4,930
1971-72	9,697	2009-10	4,995
1972-73	9,435	2010-11	5,036
1973-74	8,991	2011-12	4,994
1974-75	8,420	2012-13	5,028
1975-76	7,997	2013-14	5,110
1976-77	7,291	2014-15	5,225
1977-78	6,756	2015-16	5,237
1978-79	6,069	2016-17	5,342
1979-80	5,516	2017-18	5,412
—	—	2018-19	5,441

Table 4

Enrollment History of Arlington Heights School District 25: 1990–91 to 2018–19

School Year	K	1	2	3	4	5	6	7	8	K–8
1990–91	491	480	420	450	400	435	406	423	444	3,949
1991–92	432	515	476	419	444	391	452	402	422	3,953
1992–93	476	460	497	473	430	454	404	457	398	4,049
1993–94	484	488	440	491	465	433	453	397	458	4,109
1994–95	465	507	492	452	489	472	443	436	407	4,163
1995–96	520	498	507	500	466	497	479	453	453	4,373
1996–97	480	541	517	516	506	447	490	475	450	4,422
1997–98	444	517	555	508	513	506	465	505	491	4,504
1998–99	485	492	517	538	511	521	533	468	504	4,569
1999–00	446	525	502	529	553	532	541	549	486	4,663
2000–01	446	504	525	519	519	558	576	562	550	4,759
2001–02	451	489	490	528	514	525	576	592	567	4,732
2002–03	481	525	501	494	554	511	549	576	574	4,765
2003–04	421	551	541	496	505	559	536	573	584	4,766
2004–05	452	473	568	546	508	516	598	538	575	4,774
2005–06	461	521	483	574	562	531	542	598	548	4,820
2006–07	487	524	524	501	580	565	559	555	604	4,899
2007–08	432	585	554	533	511	592	596	564	557	4,924
2008–09	478	507	587	553	517	511	613	598	566	4,930
2009–10	503	520	521	594	557	531	550	619	600	4,995
2010–11	488	566	533	536	606	565	559	561	622	5,036
2011–12	463	551	578	548	538	603	595	560	558	4,994
2012–13	433	550	576	589	550	541	628	594	567	5,028
2013–14	450	534	574	598	608	551	566	633	596	5,110
2014–15	479	584	571	597	608	605	577	565	639	5,225
2015–16	484	600	598	563	593	621	628	581	569	5,237
2016–17	496	617	610	610	560	595	635	638	581	5,342
2017–18	508	617	613	620	621	557	610	640	626	5,412
2018–19	499	630	630	619	632	619	554	617	641	5,441

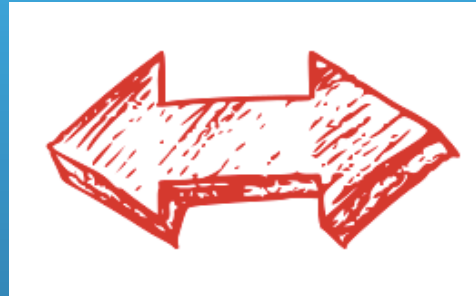
Table 5

Decomposition of Annual Sources of Enrollment Change at
Arlington Heights School District 25: September 1990 to September 2018

Transition Year Sept. to Sept.	Change Total Enrollment	Entering K vs. Exiting 8	Net Annual Migration/ Transfer
1990 to 91	4	-12	16
1991 to 92	96	54	42
1992 to 93	60	86	-26
1993 to 94	54	7	47
1994 to 95	210	113	97
1995 to 96	49	27	22
1996 to 97	82	-6	88
1997 to 98	65	-6	71
1998 to 99	94	-58	152
1999 to 00	96	-40	136
2000 to 01	-27	-99	72
2001 to 02	33	-86	119
2002 to 03	1	-153	154
2003 to 04	8	-132	140
2004 to 05	46	-114	160
2005 to 06	79	-61	140
2006 to 07	25	-172	197
2007 to 08	6	-79	85
2008 to 09	65	-63	128
2009 to 10	41	-112	153
2010 to 11	-42	-159	117
2011 to 12	34	-125	159
2012 to 13	82	-117	199
2013 to 14	115	-117	232
2014 to 15	12	-155	167
2015 to 16	105	-73	178
2016 to 17	70	-73	143
2017 to 18	29	-127	156

Incoming Kindergarten and First Student Numbers vs. Eighth Grade Graduating Numbers

School Year	K	1
1990-91	491	480
1991-92	432	515
1992-93	476	460
1993-94	484	488
1994-95	465	507
1995-96	520	498
1996-97	480	541
1997-98	444	517
1998-99	485	492
1999-00	446	525
2000-01	446	504
2001-02	451	489
2002-03	481	525
2003-04	421	551
2004-05	452	473
2005-06	461	521
2006-07	487	524
2007-08	432	585
2008-09	478	507
2009-10	503	520
2010-11	488	566
2011-12	463	551
2012-13	433	550
2013-14	450	534
2014-15	479	584
2015-16	484	600
2016-17	496	617
2017-18	508	617
2018-19	499	630



8
444
422
398
458
407
453
450
491
504
486
550
567
574
584
575
548
604
557
566
600
622
558
567
596
639
569
581
626
641

Births to Residents of Arlington Heights, Illinois: 1980 to 2016

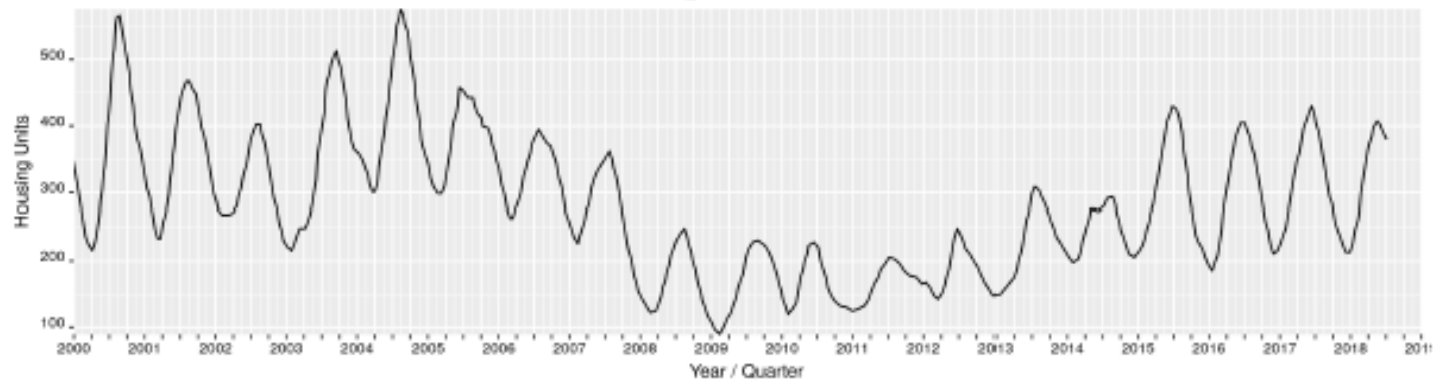
Year	Births
1980	809
1981	792
1982	806
1983	867
1984	884
1985	946
1986	1,006
1987	1,097
1988	1,146
1989	1,148
1990	1,087
1991	1,108
1992	1,105
1993	1,101
1994	1,066
1995	1,090
1996	1,050
1997	1,000
1998	951
1999	929
2000	1,038
2001	972
2002	933
2003	988
2004	902
2005	940
2006	828
2007	899
2008	853
2009	846
2010	823
2011	843
2012	886
2013	890
2014	868
2015	1,006
2016	952

Population by Age in Arlington Heights, Illinois: 1950 to 2017

Age	1950	1960	1970	1980	1990	2000	2010	2013-17
Under 5	914	3,952	5,783	3,680	5,191	4,554	4,149	4,110
5-9	828	3,921	7,857	4,779	4,735	4,924	4,698	4,514
10-14	619	2,965	8,292	6,409	4,415	5,112	4,742	4,564
15-19	490	1,646	6,052	6,487	4,321	4,242	4,346	4,127
65 and older	679	1,390	3,036	5,114	9,235	12,221	12,920	14,660
Total	8,768	27,878	66,884	66,116	75,460	76,031	75,101	75,911

Source: U.S. Bureau of the Census. Decennial Census of Population and Housing, 1950 to 2010;
American Community Survey 2013-2017 Five-Year Estimates.

Housing Units Sold



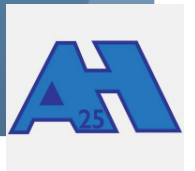
Recap of what was recommended in February 2015

- Continue to study the possible addition at Windsor School
- Continue to study Thomas Middle School space needs
- Continue to study the possible needs of Early Childhood
- Continue to study the possible addition at Westgate School
- Proceed with additions at Ivy Hill School and Olive-Mary Stitt School

Kasarda Enrollment Projections vs. Actual Enrollment

Kindergarten - Eighth Grade Enrollment Projections

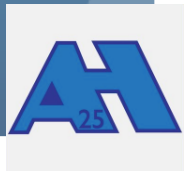
- 2015-2016 projected K-8 enrollment: 5,235 students
- 2015-2016 actual K-8 enrollment: 5,237 students
- 2016 -2017 projected K-8 enrollment: 5,317 students
- 2016-2017 actual K-8 enrollment: 5,342 students
- 2017-2018 projected K-8 enrollment: 5,434 students
- 2017-2018 actual K-8 enrollment: 5,412 students
- 2018 -2019 projected K-8 enrollment: 5,480 students
- 2018-2019 actual K-8 enrollment: 5,441 students
- **2023-2024 projected K-8 enrollment: 5,673**



Ivy Hill School

- Enrollment in 2010-2011: 450 students
- Enrollment in 2014-2015: 562 students
- Enrollment in 2018-2019: 682 students
- Projected Enrollment in 2023-2024 = 725 students*
- Significant change in demographics
 - Asian 7.1% in 2000
 - Asian 43.0% in 2017
- Housing impact for Ivy Hill School
 - Affordable housing for families moving from out of the country
 - Neighborhood homes are turning over more frequently

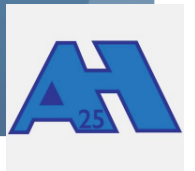
*Series B "As Anticipated Enrollment Projections"



Olive-Mary Stitt School

- Enrollment in 2010-2011: 570 students
- Enrollment in 2014-2015: 599 students
- Enrollment in 2018-2019: 632 students
- Projected Enrollment in 2023-2024 = 647 students*
- Significant change in demographics
 - Hispanic 2.4% in 2000
 - Hispanic 4.6% in 2017
- Housing impact for Olive-Mary Stitt
 - Known as a very ideal neighborhood for potential buyers
 - Teardowns and existing home renovations

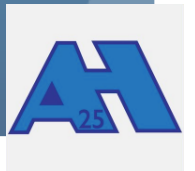
*Series B "As Anticipated Enrollment Projections"



Windsor School

- Enrollment in 2010-2011: 454 students
- Enrollment in 2014-2015: 474 students
- Enrollment in 2018-2019: 521 students
- Projected Enrollment in 2023-2024 = 563 students*
- Significant change in demographics
 - Hispanic 2.9% in 2000
 - Hispanic 12.5% in 2017
 - Asian 1.5% in 2000
 - Asian 6.4% in 2017
- New housing impacts Windsor
 - Luxury apartments still being proposed within boundaries
 - Teardowns and existing home renovations

*Series B “As Anticipated Enrollment Projections”



Westgate School

- Enrollment in 2010-2011: 589 students
- Enrollment in 2014 -2015: 622 students
- Enrollment in 2018-2019: 571 students
- Projected Enrollment in 2023-2023 = 557 students*
- Significant change in demographics
 - Hispanic 4.1% in 2000
 - Hispanic 9.2% in 2017
- We will monitor the new subdivision in the Westgate attendance area along with any teardowns
- We are not sure of what impact the proposed downtown Arlington Heights condos/row houses will have on enrollment

*Series B “As Anticipated Enrollment Projections”



Thomas Middle School

- Enrollment in 2014: 912 students
- Enrollment in 2017: 960 students
- Projected Enrollment in 2021-2022=1042 students*
- Changes in demographics
 - Hispanic 2.5% in 2000
 - Hispanic 7.0% in 2016
 - Asian 3.6% in 2000
 - Asian 9.5% in 2016
- The current construction project will support the increased enrollment projections

*Series B “As Anticipated Enrollment Projections”



Early Childhood / Greenbrier

Early Childhood Enrollment

Total Greenbrier K-5 Enrollment*

2011-2012 109 students

261 students

2012-2013 127 students

247 students

2013-2014 139 students

243 students

2014-2015 130 students

243 students

2015-2016 124 students

267 students

2016-2017 143 students

276 students

2017-2018 164 students

264 students

2018-2019 147 students

280 students



What About New Housing?

- Large tracts of land for new construction are not readily available in AHSD25 boundaries
- A major factor is turnover of existing housing and we continue to see requests for teardowns and renovations
- We see a change of demographics from “empty nesters” to families with kids
- There are plans for more luxury apartments within AHSD25 which can impact enrollment forecasts, especially if low income housing is placed in the development
- We will continue to work in conjunction with the Village of Arlington Heights to assess the housing landscape



What Does the Future hold?



- There is no crystal ball...
- We need to continue to monitor our enrollment trends on a monthly basis to ensure we have adequate space for our programmatic needs at all of our schools
- Previously, 3 out of 4 kindergartners, in general, are not born in their school district and moved to the school district after they were born
- Registered births are up in Arlington Heights since 2010
- Solid housing turnover
- A conservative estimate shows that our student enrollment will grow by 232 students in the next 5 years
- Increased diversity within the school district
- There is a continuing belief that Arlington Heights School District 25 is still viewed as a destination district